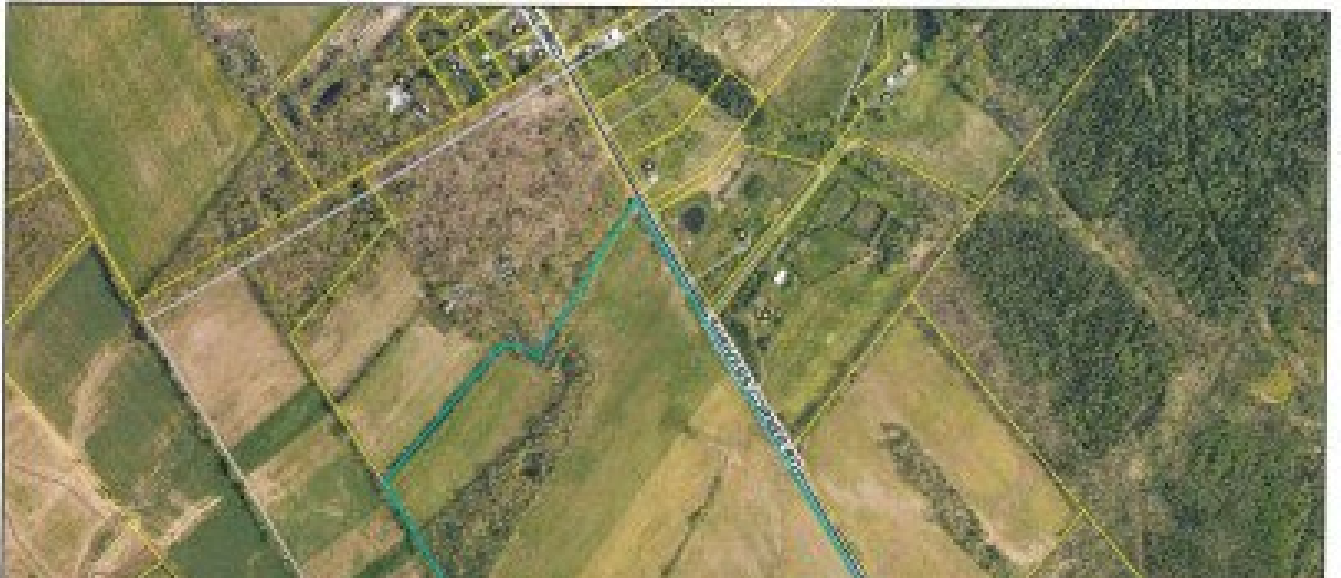


**0 Shrovers Corner Road**  
Gettysburg, PA 17325

*Sites Realty, Inc.*

Powered by [sample-news.rs.aws.wehaa.net](http://sample-news.rs.aws.wehaa.net)

MLS# PAAD2010004



**\$189,900**

12+ acres being subdivided from parent 59 acre tract. Subject to seller obtaining perc approval for on site septic. Land adjacent to solar field with wetland buffer area between (see plat)



**Sites Realty, Inc.**

Sites Realty, Inc.

Office: (717) 334-4674

For full listing details, please scan:

